



# BearExtender

High Power Wi-Fi

# Outdoor

## Windows XP Guide

---



### Step 1: Install Software

**Do not connect BearExtender's USB cable yet**

If you have already connected it, please disconnect it.

Insert the CD-ROM into your computer.

When the Autorun menu appears, click the Install button.

It may take up to 30 seconds for the Autorun menu to appear, depending on the speed of your PC.

If the Autorun menu does not appear, navigate to your CD drive, then right-click it and select "Open." Then double click the Setup program to begin.

Once the software has installed, connect BearExtender Outdoor's USB cable directly to your computer.

A popup will appear in the bottom right corner of your screen.

A second popup will confirm that the installation has completed.

Depending on your version of Windows XP Service Pack, you may not see a message saying the installation has completed.

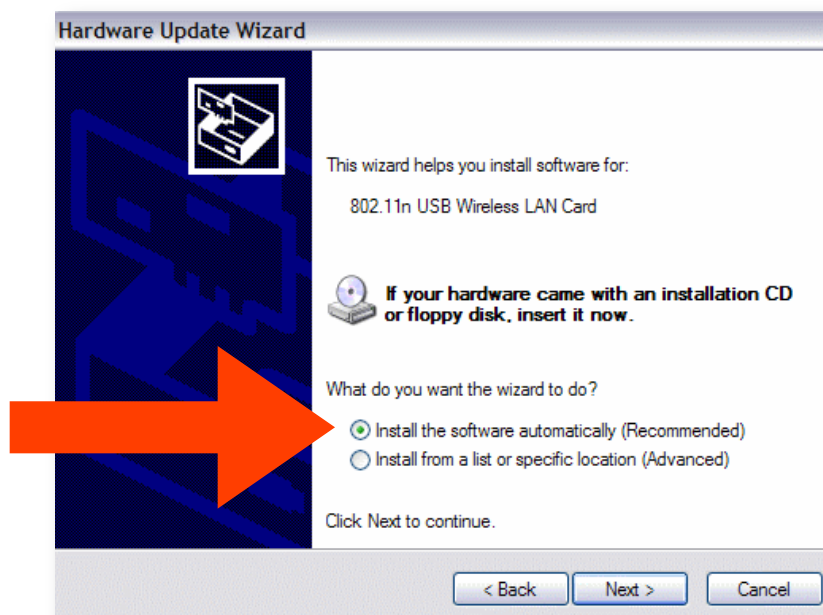


Instead, you may see the Windows Hardware wizard. If the Windows Hardware wizard appears on your screen, on the first screen select "No, not this time."

Then on the next screen select "Install software automatically (Recommended)".



The hardware wizard will then complete the installation. Depending on your processor speed, this process can take up to 2 minutes.



Once completed, click the Finish button and proceed to the next step.

## Step 2: Disable your Built-in Wi-Fi card

If your computer has a built-in Wi-Fi card, please disable it.

Some laptops have a ON/OFF switch for disabling the built-in Wi-Fi card. If your computer does not have a switch, go to Control Panel > Network Connections.

Then right-click your built-in Wi-Fi card and click "Disable."

You can repeat this step and select "Enable" when you wish to use your internal Wi-Fi card again.

Instructions continued on next page

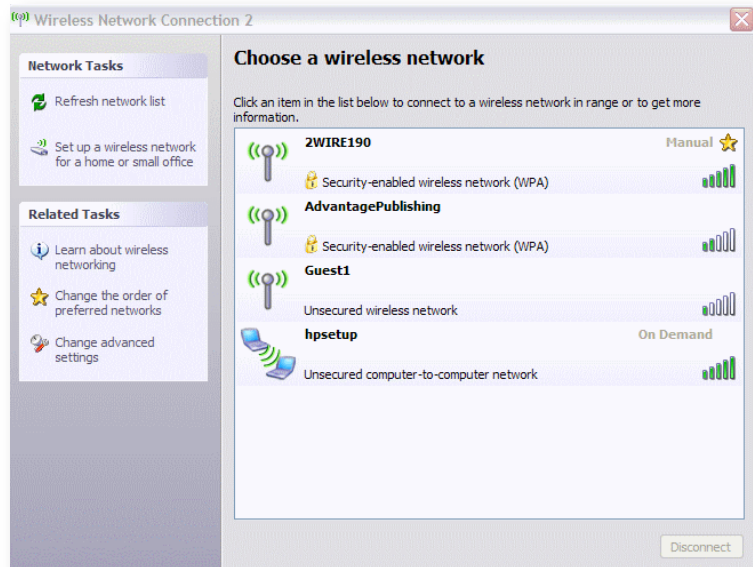
## Step 3: Scan and Join a Network

Because BearExtender Outdoor uses the built-in Windows XP interface for connecting to wireless networks, there is no new software to learn.

Simply right-click on the Network icon located in the bottom right corner of your screen:



Then select "View Available Networks".



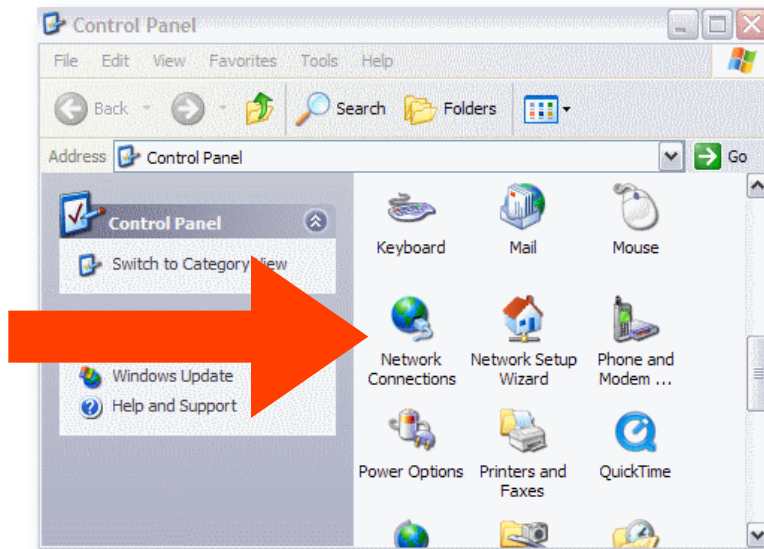
A list of nearby networks will appear.

Select your network and click "Connect."  
You will be asked for a password if required.

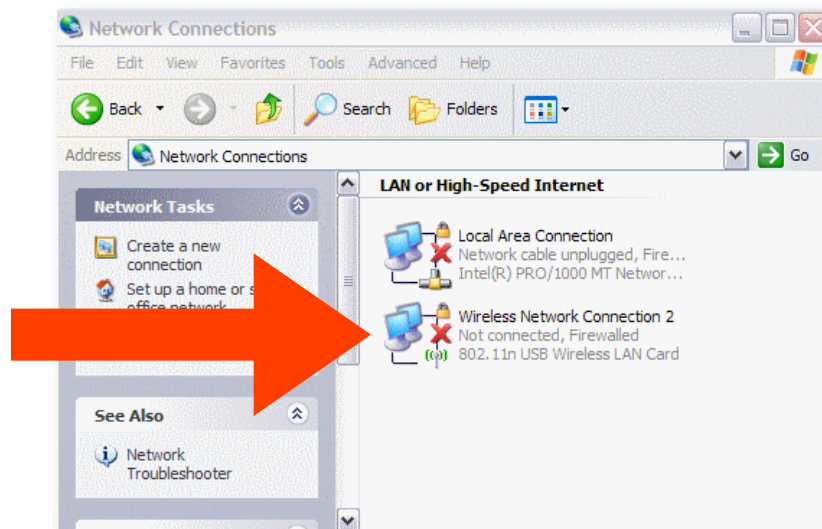
Instructions continued on next page

If you are unable to locate the Network icon, follow these steps:

1. Go to Control Panel
2. Double click "Network Connections"
3. Then right-click "Wireless Connection 2" and select "View Available Wireless Networks"



The digit after "Wireless Network Connection" may vary if you have previously had other Wi-Fi adapters installed on your computer.



## Congratulations

You have finished setting up BearExtender Outdoor.

If you need additional help, please see the Troubleshooting section or contact us using the information at the end of this guide.

## Troubleshooting

1. I do not see any connection icon in the bottom right of my screen, and when I follow the instructions to go to the device in the Control Panel > Network Connections I am not able to see the device there either.

Be sure you have run the Setup program from the CD in its entirety. If you have, and BearExtender Outdoor is connected to your computer, please contact BearExtender support for further assistance.

2. The specifications for this product say 150 Mbps max speed, but the Connection Status tab reports that I am only connected at 54 Mbps, why?

This most likely means you are connected to an 802.11g router. To achieve speeds above 54 Mbps you must be connected to an 802.11n router. Depending on how your 802.11n router is set, you may connect above 54 mbps but below 150 Mbps.

For information on how to maximize transfer speeds by adjusting your router settings for optimal 802.11n performance, please contact BearExtender support. Please be sure to include your Wireless Router brand and model number.

3. When scanning for networks I see the exact same number of networks and the same signal strength compared to my internal WiFi card. How can this be?

There are two possible issues here. First, if you have not disabled your internal Wi-Fi card per this instruction manual, Windows is still using your internal card to scan for network connections. So even though BearExtender Outdoor may be connected to your computer, your computer is not using it. Please follow the steps outlined in Step 2 of this document to ensure your internal card is disabled.

If you have confirmed your internal network card is disabled, the other possibility is there may not be any other Wi-Fi networks in range. Unlike 3G/cellular data service, which you have to pay for, Wi-Fi does not have a monthly service fee but you do need to be within range of a wireless network in order to use it.

If there is only one signal around you for several thousand feet, and it is ten feet away from you, both your internal WiFi card and BearExtender will probably detect it at close to 100% signal, but it may be the only network that either can detect.

This does not mean BearExtender Outdoor is getting the same range as your internal card, it simply means there are no more signals within range of either device.

## Contact Us

Email support is available 24 hours a day, 7 days a week.  
The average response time is 6 to 12 hours.

[Support@BearExtender.com](mailto:Support@BearExtender.com)

Email support is the fastest way to reach us, and most issues can be resolved over email.